

# Diaform Dresser Series

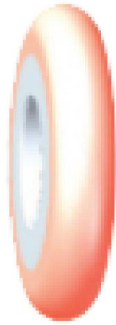


Diamond dresser knife shape series: The product is mainly suitable for the precision dressing of various CNC grinder grinding wheels furnishing complex surface such as outer circle, end face, arc, angle and groove of grinding wheel. It is widely used in the manufacture of precision spare parts for engine parts, internal combustion engines and parts, reducers, gears and so on.

## Types Of Grinding Wheels Dressing



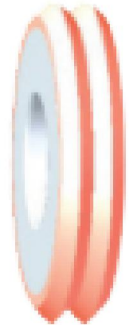
Double Hypotenuse



External Arc



Inside Arc

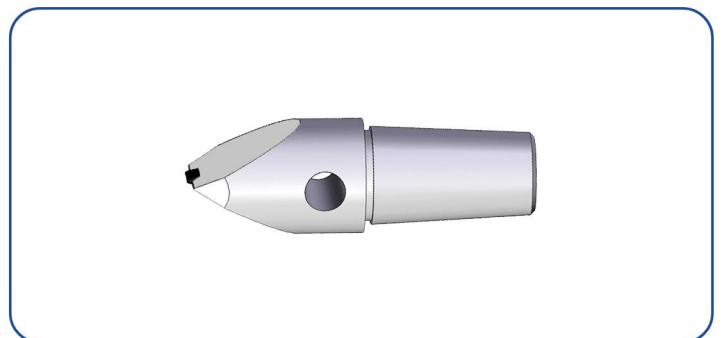
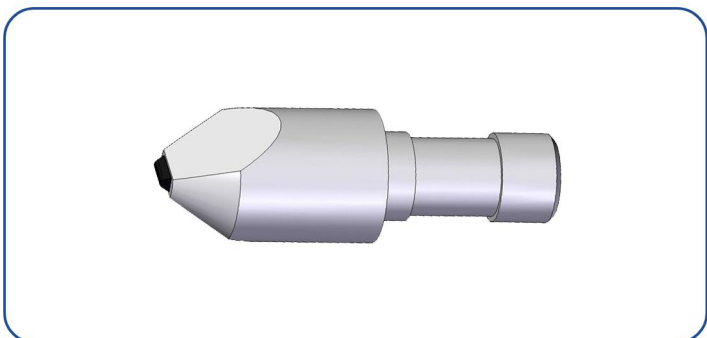
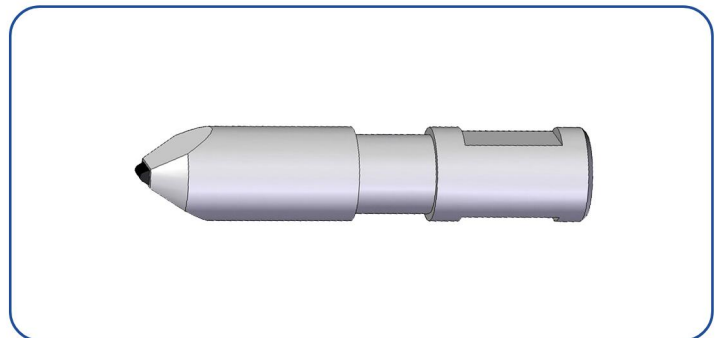
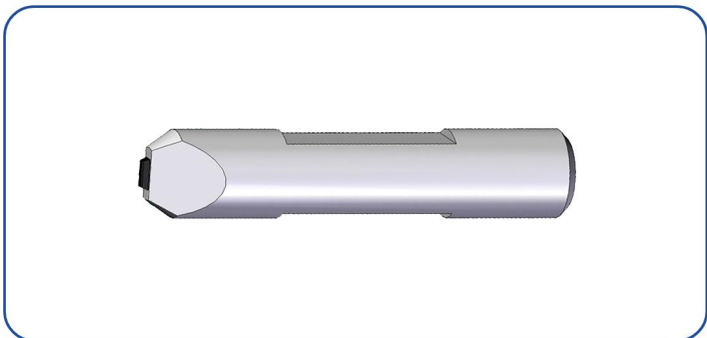
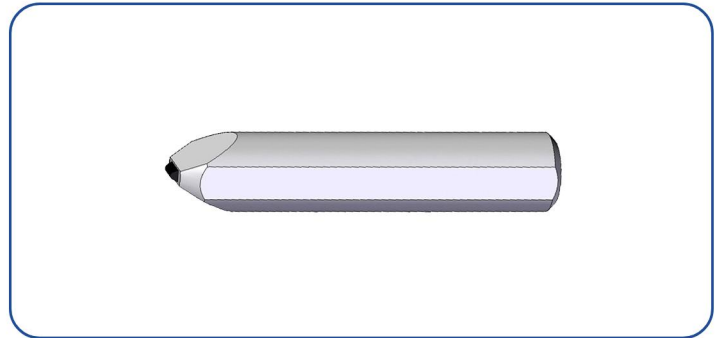
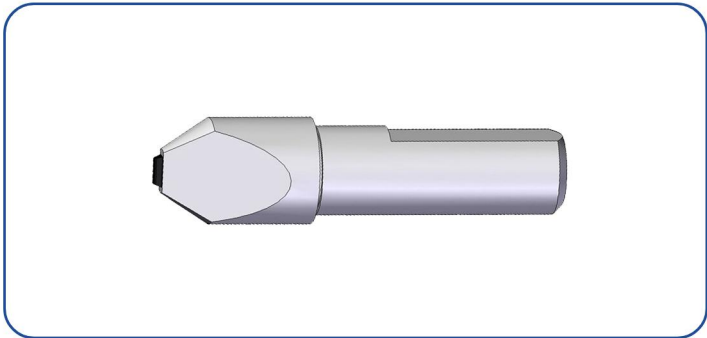
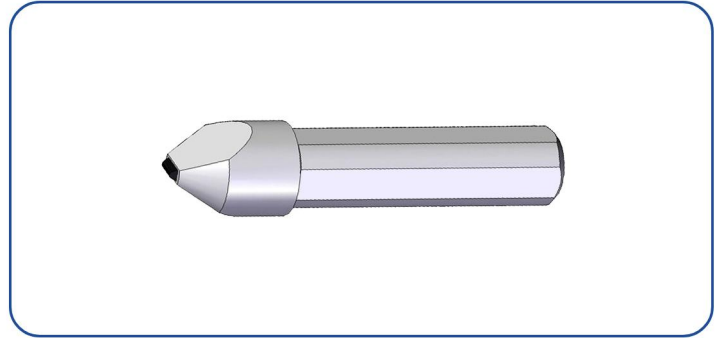
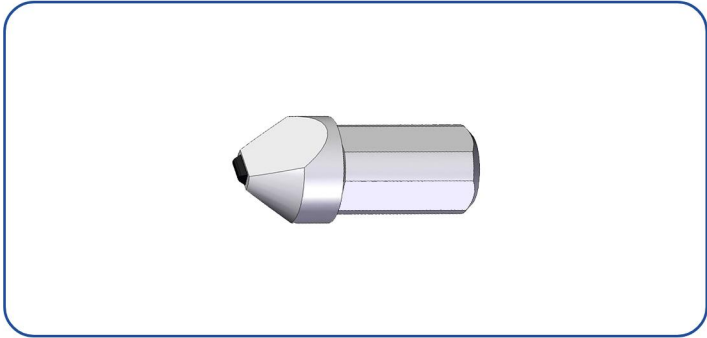


Special Shaped

## Commonly Used Models

SKU	Diamond Weight	Type	Grade	Suitable Grinding Wheel Particle Size	Angle	Arc
C3015	0.8 Carat	Natural Diamond Artificial Diamond	A、B	60-80#	40°	R0.05
C3515	1.0 Carat	Natural Diamond Artificial Diamond	A、B	60-100#		R0.1
C4020	1.25 Carat	Natural Diamond Artificial Diamond	A、B	60-100#	55°	R0.15
T3500	0.8 Carat	Natural Diamond	A、B	80-220#	60°	R0.2
T25308	1 Carat	Natural Diamond	A、B	60-300#	70°	R0.25
T3030	1.2 Carat	Natural Diamond	A、B	80-500#		R0.3
						R0.5
						R0.8
						R1.0

## Common Shape Product Display



## Product Display



2-1



2-2



2-3



2-4



2-5



2-6



2-7



2-8



2-9



2-10

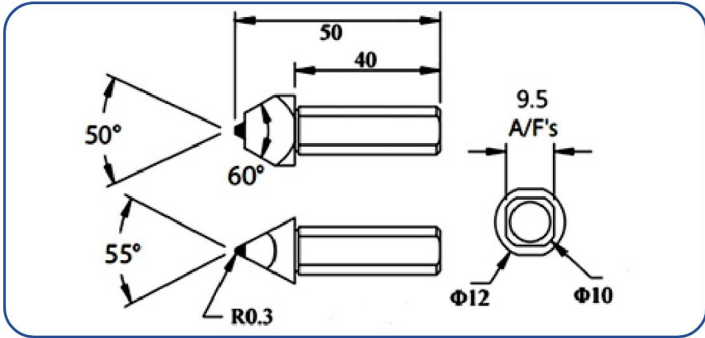


2-11

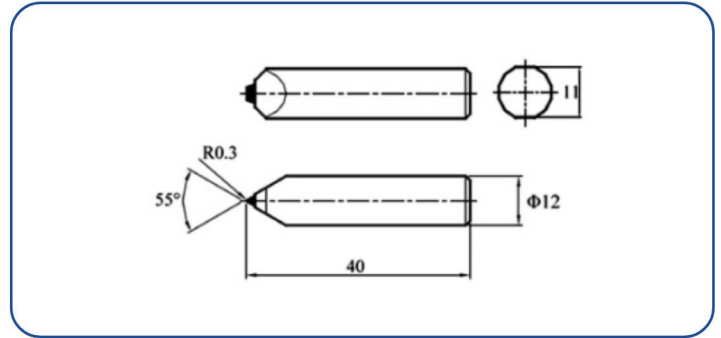


2-12

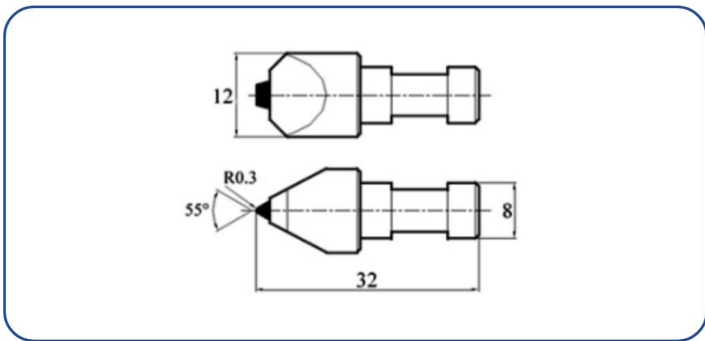
## Common Model Drawing



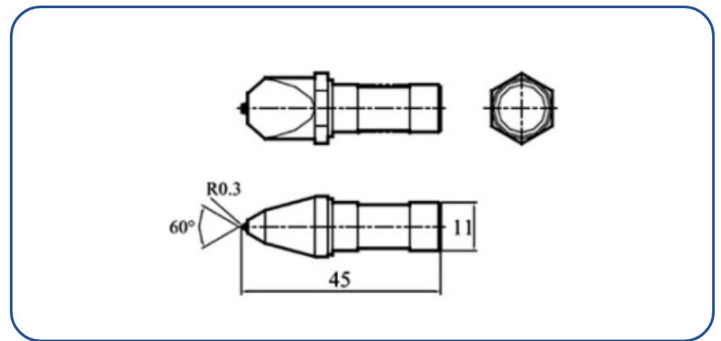
2-1



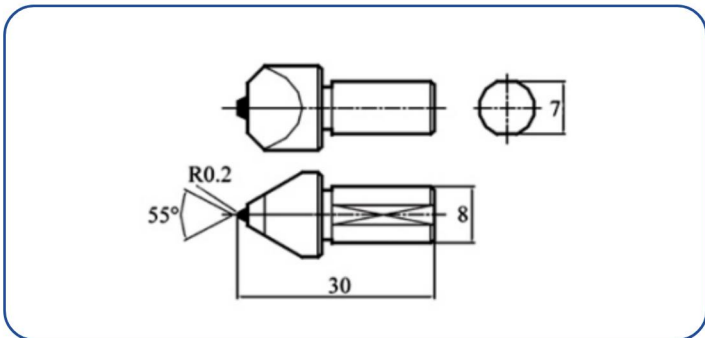
2-2



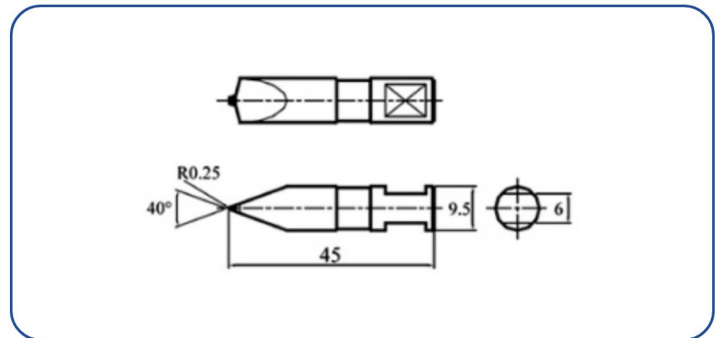
2-3



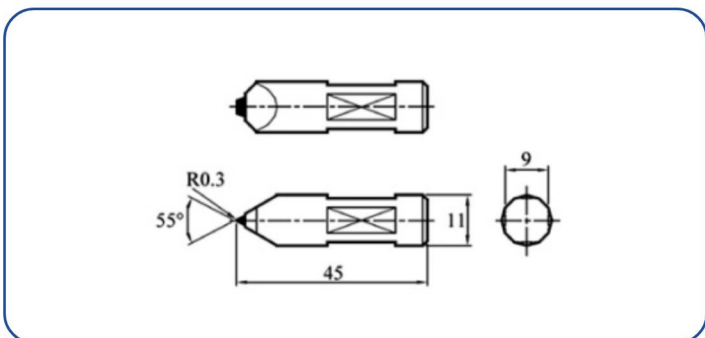
2-4



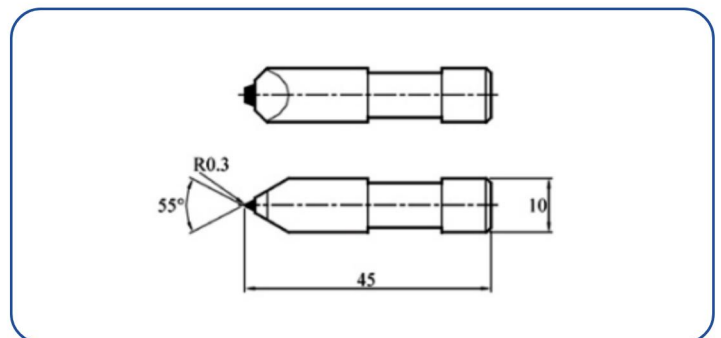
2-5



2-6



2-7



2-8