

Multi Point Diamond Dresser Series



The product is suitable for the dressing of ordinary cylindrical grinders, centerless grinders, surface grinders, and is also suitable for the shaping and dressing of complex surfaces such as the grinding wheel surface, angles and arcs of CNC grinders. It is especially suitable for the dressing of coarse-grained grinding wheels. Under high-frequency and high-strength working environment, it is wear-resistant and has high dressing efficiency, and has both long life and stability.

Types Of Grinding Wheels Dressing



Parallel



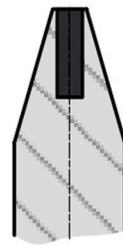
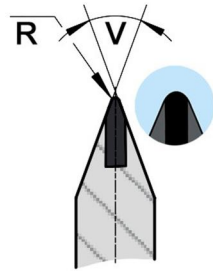
One Side Tapered



Double Hypotenuse

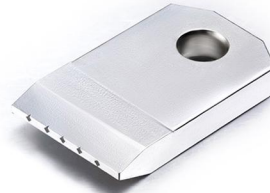
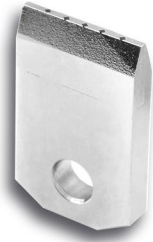


External Arc Round



SKU	Number Of Diamonds	Suitable Grinding Diameter	Schematic Diagram Of Cutter Head Shape	Arc	Angle
M011	1	φ100-φ250		R0.1	V30°
M012	2	φ200-φ300		R0.2	V40°
M018	3	φ350-φ500		R0.25	V50°
M0110	4	φ500-φ750		R0.3	V55°
C0105	5	φ350-φ500		R0.5	V60°
C0106	6	φ450-φ600		R0.8	V85°
C0107	7	φ600-φ750		R1.0	V110°
C0109	9	φ500-φ900			
C0111	11	φ600-φ1100			

Parameters Of Flake Diamond Dresser



SKU	Number Of Diamonds	Suitable Grinding Diameter	Working Part Shape
D102	2	φ350-φ500	
D103	3	φ500-φ750	
D104	4	φ350-φ500	
D105	5	φ450-φ600	
D107	7	φ600-φ750	
D109	9	φ500-φ900	
D111	11	φ600-φ1100	

Diamond diameter corresponding to grinding wheel size and particle size:

Grinding Wheel Diameter	Grinding Wheel Particle Size	Diamond Diameter	Schematic Diagram Of Stripe Diamond Material
φ200	180-200#	0.4mm	
φ200-φ350	120#-180#	0.6mm	
φ350-φ500	80#-120#	0.8mm	
φ400-φ750	60#-80#	1.0mm	
φ600-φ900	46#	1.2mm	

Powder diamond dresser

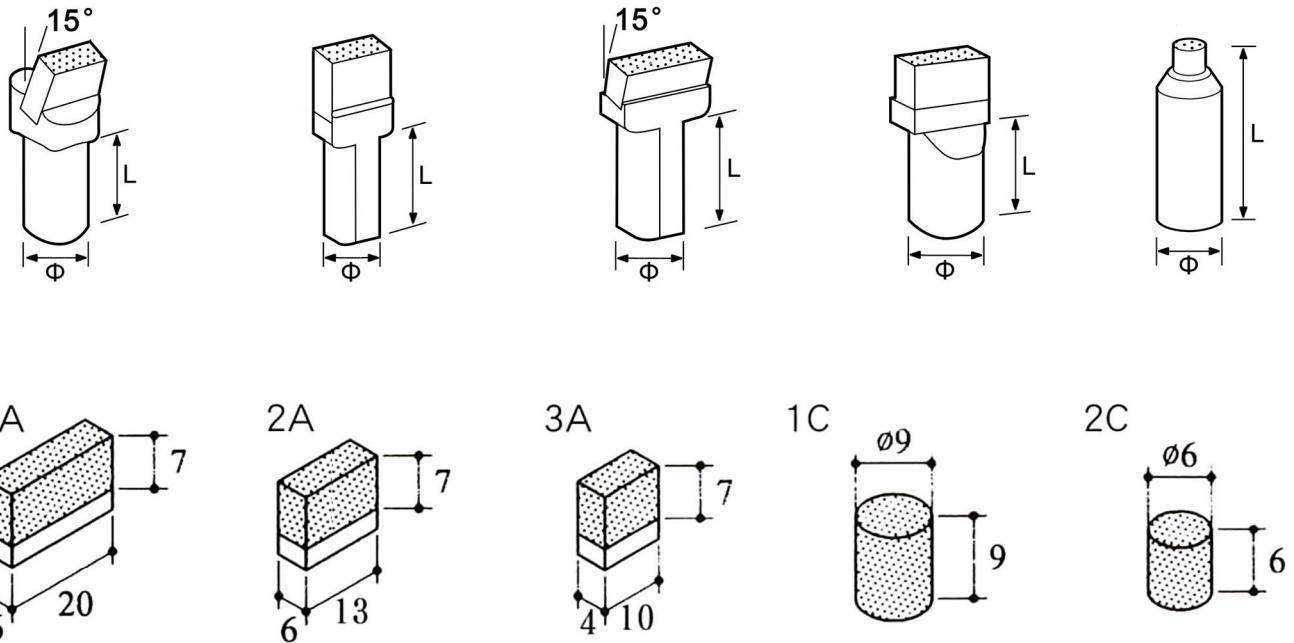


The products are mainly used for the coarse dressing of grinding wheels on ordinary cylindrical grinder, centerless grinder, surface grinder and some special grinders (such as thread grinder and gear grinder), and the production with fine particle diamond raw materials (as shown in the figure below) :

Description of diamond mesh:

Particle Size Code	Diamond Particle Size	Suitable Grinding Wheel Particle Size
R	16-20#	36-46#
	20-30#	46#
M	30-40#	46-60#
	40-50#	46-60#
F	50-60#	60-80#
	80-100#	80-100#
	100-120#	100-140#
T	140-170#	140-200#
	170-200#	200-240#

Diamond Part Size Shape And Size Schematic Diagram



SKU	Diamond Size	Diamond Particle Size	Schematic Diagram	The Handle Body Size	Suitable Scope
DF20#	1A、2A	16#-200#		Φ10×L30	Centerless grinding machine, Cylindrical grinding machine, Surface grinding machine
DF40#	1A、2A、3A			Φ10×L50	
DF50#	1A、2A、3A			Φ11×L20	
DF60#	1A、2A、3A			Φ11×L25	
DF80#	2A、3A			Φ12×L30	
			Φ12×L50		
			MK0、MK1		
DY100#	1C、2C	16#-200#		Φ8×L50	Internal grinder, Gear grinder, Centerless grinding machine, Thread grinding machine
DY140#	1C、2C			Φ10×L60	
				Φ11×L60	
				Φ12×L80	
DY170#	1C、2C			MK0	
				MK1	

Product Display



3-1



3-2



3-3



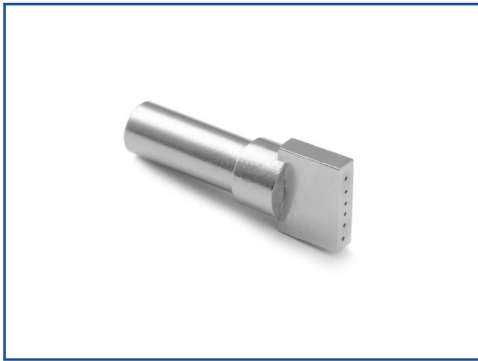
3-4



3-5



3-6



3-7



3-8



3-9



3-10

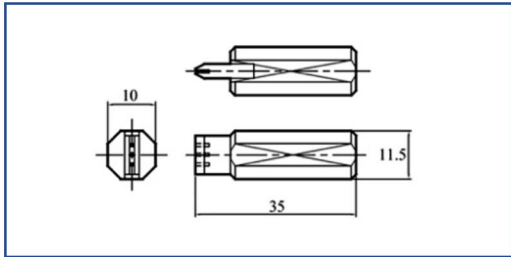


3-11

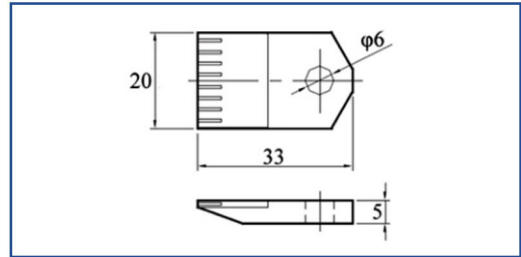


3-12

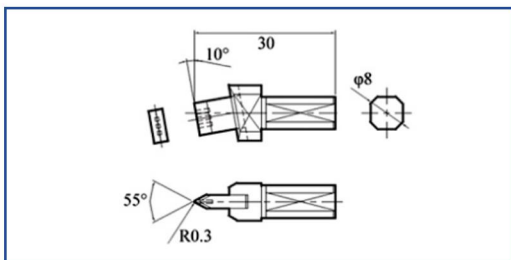
Product Display



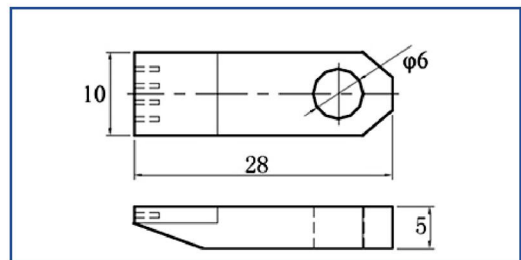
4-1



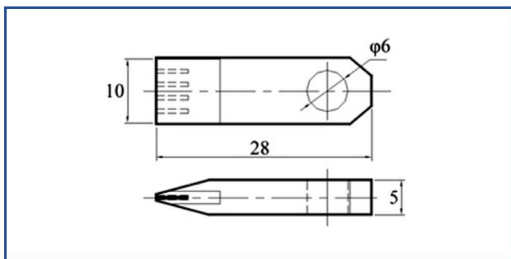
4-2



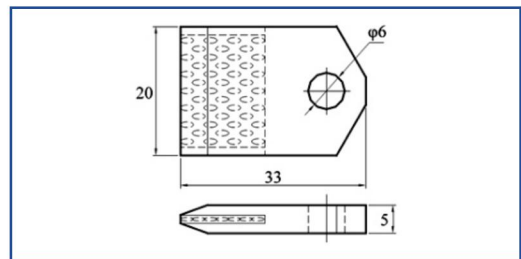
4-3



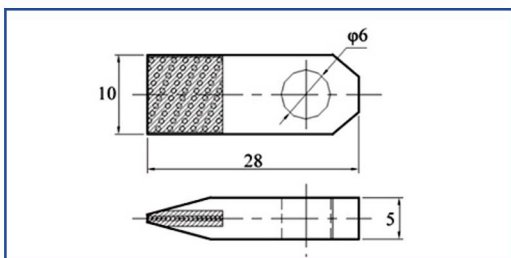
4-4



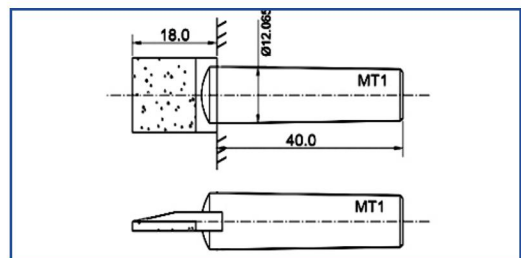
4-5



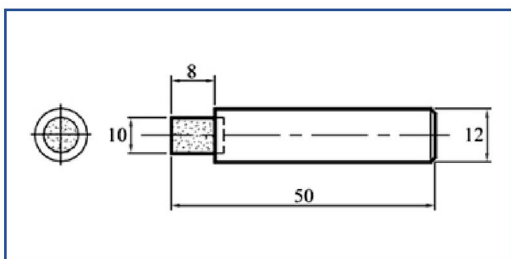
4-6



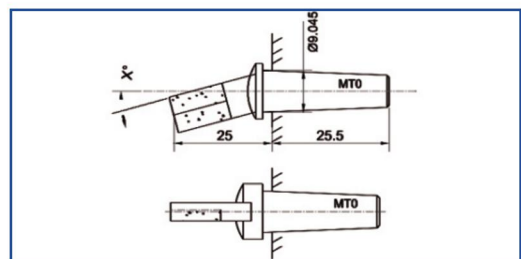
4-7



4-8



4-9



4-10